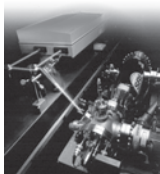


2010

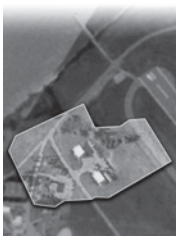
SRI innovations touch our lives every day. They have created new industries, billions of dollars in market value, and lasting benefits to society.



2000

Trace Species Detection

Developed technology to detect hazardous chemicals, explosives, and narcotics at parts-per-trillion levels



2001

Real-Time Video Processing

Deployed novel georegistration technology to find objects on the ground from aerial surveillance video



2002

Charter Schools

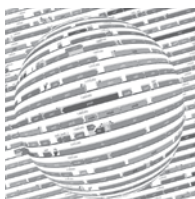
Conducted first national evaluation of the growing U.S. charter school movement



2003–today

Combat Training

Began integrating live, virtual, and constructive training systems for the U.S. National Guard; more than 20,000 soldiers trained



2003

Genome/Pathway Databases

Creation of BioCyc™ database and Pathway Tools software to help biologists visualize biochemical pathways and metabolic maps



2005

Incoherent Scatter Radar

Created the Advanced Modular Incoherent Scatter Radar (AMISR) system, a milestone in scientists' ability to study the complex upper atmosphere



2004

Coordinated Robots

Designed the Centibots—the earliest and largest team of coordinated, mobile robots that can map unknown environments



2006

Speech-to-Speech Translation

Deploying technology for mobile devices that enables soldiers and others to communicate in local languages in real time



2010

Intelligent Computing

Developed the first consumer application of a virtual personal assistant; spun off as Siri, Inc; acquired by Apple and integrated into the iPhone

50

SRI was dubbed “Spin-off City”—an innovation engine that creates new businesses to capitalize on SRI technology developments and move them into the marketplace.

50



1990s

Television

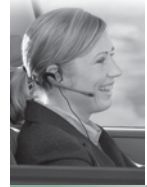
As part of the Emmy® Award-winning “Grand Alliance”, developed the U.S. standard for high-definition television (HDTV)



1990s

Smart Materials

Invented “artificial muscle”, a new class of electroactive polymers; spun off Artificial Muscle, Inc. in 2004



1994

Speech Recognition

Developed and licensed a natural language platform technology to automate delivery of customer support; spun off Nuance Communications



1996

Network Intrusion Detection

Invented EMERALD™, a software-based intrusion detection technology that uses lightweight sensors for real-time cyberattack detection



1998–present

Assisted Hydrothermal Oxidation

Patented this environmentally safe, cost-effective method to dispose of hazardous materials and explosives; licensed by Mitsubishi Heavy Industries in Japan



1990s–present

Ground- and Foliage-penetrating Radar

Pioneered technology to find buried or hidden unexploded ordnance and other items of interest



1990s

Robotic Surgery

Developed minimally invasive robotic surgical system. Today, SRI spin-off Intuitive Surgical’s da Vinci® system is in use worldwide.



1990s

Cancer Drugs

Discovered a new class of cancer-fighting drugs. One discovery, targetin, is in clinical use against a type of lymphoma.

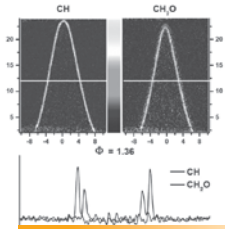


1990s–today

Bio-agent Detection

Began developing portable technology for biological warfare detection, disease and drug abuse diagnostics, and environmental monitoring

SRI expanded significantly in 1987 when the David Sarnoff Research Center (RCA Laboratories) became part of SRI.



1980s

Two-dimensional Laser Fluorescence Imaging

Designed technology used worldwide to visualize flow and chemical processes in combustion



1980s

FM Spectroscopy

Developed ultrasensitive trace gas detection technology for explosives detection, medical diagnostics, industrial process control, and pollution monitoring



1980s

Multimedia Electronic Mail

Implemented one of the first electronic mail systems that included graphics, speech, and text



1980s

Ultrasound

Made ultrasound practical as a medical diagnostic tool



1980s

Stealth Technologies

Developed an active radar cross-section reduction method to help U.S. military planes avoid enemy radar detection



1983

Broadcasting

Developed wavelet technology (later adopted for MPEG-4 video compression) and the first professional solid-state camera, making highly mobile TV crews possible



1980s

Consumer Psychology

Designed the Values and Lifestyles™ (VALS) market research tool, used by advertisers to determine motivation for consumer purchasing decisions



1980s-present

Failure Analysis

Developed FRASTA (FRActure Surface Topography Analysis), a tool for re-creating cracks in structures for failure analysis

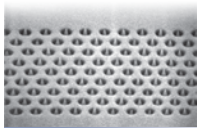
Stanford Research Institute became independent from Stanford University in 1970, and in 1977 changed its name to SRI International.



1976-1977

Packet-switching and Internet

Sent first mobile internetworked transmissions between two, and later three, disparate networks



1970s

Spindt Gold Cathode

Developed high current-density cathode ray tubes; led to today's "instant-on" displays for computers and televisions



1978

Deafnet

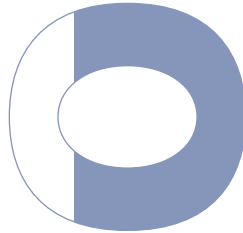
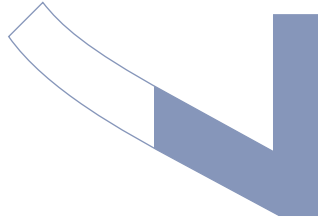
Developed the first telecommunications system that allowed the hearing impaired to use email and computer communications



1978

Solar Electricity

Designed the world's first amorphous solar silicon cell, widely used to convert sunlight to electricity



1970-1992

Network Information Center

Served as the first domain name registration clearinghouse and support center for all hosts connecting to the ARPANET and Internet



1978-present

Education

Launched first longitudinal studies of youth with disabilities to improve the U.S. education system



1970s-present

Over-the-Horizon Radar

Pioneered technology for the military that detects objects thousands of miles beyond the horizon or conventional lines of sight



1979

China's Industrial Development

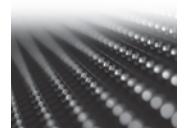
Engaged with political, business, and academic leaders to build relationships with foreign businesses



1970s

Cash Management Account

Created concept of a convenient single account that includes stocks, bonds, money market funds, checking, and credit/debit card services



1978-present

Lighting

Created the world's first blue light-emitting diode (LED)

SRI expanded from its West Coast base and grew its reputation as an international R&D powerhouse.



1962

Computerized Airline Reservations

Developed a real-time reservation and check-in system, adopted by Scandinavian Airlines, IBM, and others



1968

Interactive Computing

Invented mouse in 1964 and in 1968 first demonstrated the concepts of windows, videoconferencing, hypertext, and more



1960s

Optical Read-Write Storage

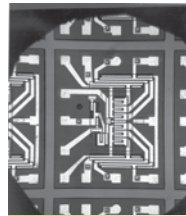
Pioneered technology that led to widespread commercial development of optical disk systems



1966

Robotics

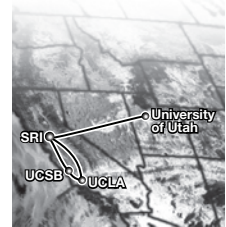
Created Shakey, the world's first intelligent mobile robot



1967

Semiconductors

Introduced the Complementary Metal Oxide Semiconductor (CMOS) integrated circuit; the technology is widely used today in portable devices



1969

Networking

Enabled first logon on the ARPANET, the Internet's precursor



1960s

Pacific Rim Industrial Development

Co-created the Japan-Western Americas Association and the Pacific Basin Economic Council; collaborated in design of Japan's Nomura Research Institute



1960s

LIDAR

Pioneered laser radars for meteorology to provide accurate data for weather and pollution monitoring

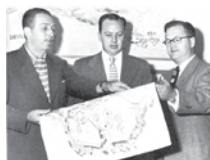


1960s-today

National Defense

Deployed radar and stealth technologies in the Cold War, GPS in the Gulf War, and intelligence systems for today's war against terrorism

These are a few of SRI's many innovations. For more, visit www.sri.com.



1955

Theme Parks

Identified Anaheim, California, as the site for Disneyland



1954

Railway Transport

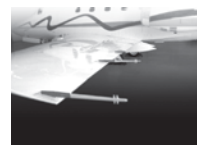
Designed the Hydra Cushion, an industry-standard, shock-absorbing coupler technology for Southern Pacific Railroad



1953

Broadcasting

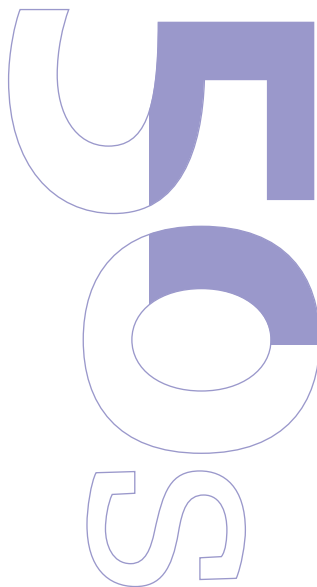
Devised the first complete electronic color TV system, adopted as the NTSC standard and still in use today. In 1955, introduced color videotape recording for broadcast use.



1950s

Electrostatic Discharge Rods

Developed industry-standard devices to safely discharge static electricity from aircraft, spacecraft, and tankers



1959

Movies

Won an Academy Award for co-developing the Technicolor® electronic printing timer, which speeded creation of color-corrected movie prints



1955

Banking

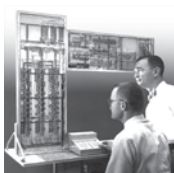
Revolutionized the industry with automatic check processing and magnetic ink character recognition



1957-1997

Worldwide CEO Summits

Sponsored the International Industrial Conference, a quadrennial summit of world and business leaders from 50 countries



1950s

All-Magnetic Logic

Developed world's first all-magnetic computer, producing essentially error-free computing. Used in New York City's subway system



1950s

Economic Development

Began providing consulting to more than 100 countries, including counsel for the creation of India's National Council for Applied Economic Research



1949

Air Pollution Symposium

Hosted first national symposium on air pollution, bringing together 400 researchers and scientists



1940

Microscopy

Invented the first practical transmission electron microscope



SRI International • Menlo Park, CA • 650.859.2000 • www.sri.com

Printed on FSC-certified paper with soy inks. SRI, SRI International, EMERALD, Values and Lifestyles, VALS, and BioCyc are either trademarks or registered trademarks of SRI International. All other trademarks are the property of their respective owners. Photo for "Robotic Surgery" courtesy of Intuitive Surgical, Inc. ©2012 SRI International. All rights reserved. 01/12