

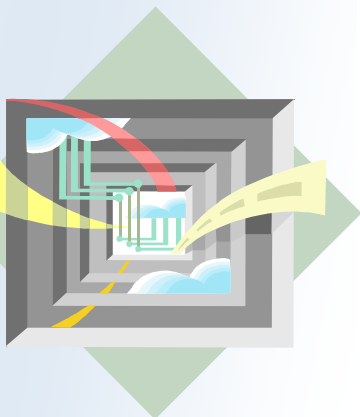
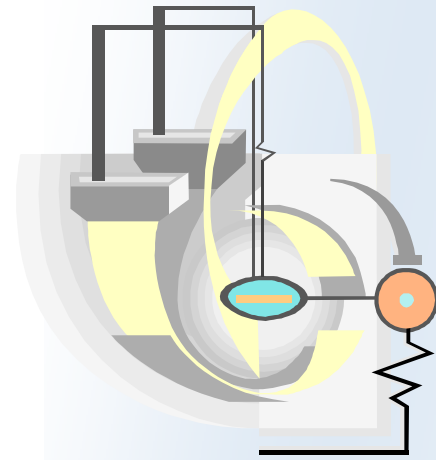
Research Evaluation and Planning at SRI International

Promoting science, technology, and innovation

Evaluation and planning are becoming more widely recognized as critical to investments in, and management of, science and technology (S&T) projects and programs, including health research. This recognition is driven by the growth in public and private investments in S&T and increasing demand for improved performance and accountability.

SRI conducts evaluations and planning of research and development (R&D) programs and centers; technology innovation, commercialization, assistance, and transfer; and higher education and workforce development programs. SRI provides objective evaluation, analysis, and practical recommendations on policies and programs, assisting governments and corporate clients in the United States and many other countries in making sound policy and strategic choices. For more than 25 years, SRI has worked with public and private sector clients to develop strategies for enhancing research productivity, technological innovation, and economic competitiveness, during which we have been at the forefront of new approaches to evaluation techniques, economic analysis, strategy development, and public-private collaboration.

SRI has a diverse team of quantitative and qualitative evaluation experts, including experts in experimental and quasi-experimental research design, case study managers, survey design and sampling specialists, focus group organizers, seasoned interviewers, program information and database analysts, bibliometric and patent analysts, and specialists in data mining, data visualization, and social network analysis. SRI features sound business practices, experienced project leaders, and staff who can express study results clearly and appropriately.



SRI has expertise in a broad range of evaluation techniques, including:

Evaluation Design

- Stakeholder identification
- Conceptual framework development
- Study question development
- Key variable development including performance measurements

Data Collection and Analysis

- Questionnaire design
- Survey administration/ research
- Interviews/focus groups
- Site visits/field work
- Expert panels
- Case studies
- Literature reviews
- Databases
- Bibliometric and patent analysis
- Statistics
- Benefit and cost analysis
- Data mining and visualization
- Social network analysis

Strategy/planning

- Communication facilitation
- Workshops hosting
- Strategic recommendation development

SRI International

SRI International is one of the world's largest and most respected research and consulting organizations. Founded in 1946 as the Stanford Research Institute, SRI today is an independent, nonprofit corporation. The Institute boasts a staff of 1,400 professionals located in a worldwide network of offices, with headquarters in Menlo Park, CA. SRI provides a broad spectrum of basic and applied research and consulting services. SRI staff conduct research in engineering, biosciences, information and computing sciences, and physical sciences, as well as policy research and consulting.

Center for Science, Technology, and Economic Development (CSTED)

SRI's S&T Evaluation Group is part of the Center for Science, Technology, and Economic Development (CSTED) in SRI's Policy Division. Based in Rosslyn, VA, CSTED has modern facilities including conference rooms. Staff can easily meet with metropolitan Washington-based clients on short notice. CSTED encompasses two core programs—the Science and Technology Policy Program and the

Economics Practice—that work together to customize responses to client needs.

Science and Technology Policy Program

The Science and Technology Policy Program conducts assessments and analyses of national, international, state and regional S&T policies, programs, research systems, and capabilities. These include evaluations and policy studies of higher education programs and reforms, grant-making processes, development of higher education faculty, teacher enhancement, and workforce skills enhancement.

Program staff have extensive experience with technology transfer and commercialization, including numerous studies of innovation and industry impacts from government-sponsored research, studies of technology transfer from national laboratories, and more than 20 years experience with patent analysis for technology assessment and intellectual property management.

The Economics Practice

The Economics Practice conducts research, analysis, and strategic planning on economic development and workforce competitiveness issues. The Practice has conducted evaluation and planning for technology-based and industry-cluster-based economic development in over 60 states and regions in the United States, and 115 countries throughout the world.

Additional Resources

The wide range of skills available in SRI's CSTED is supplemented by broader science, technology, and industry experts within SRI as a whole. This allows us to assemble the optimal team of professional talent to solve complex, multidisciplinary problems for business and government clients.

What Distinguishes Us from Other Consulting Firms

Reputation and Objectivity. SRI has developed a strong reputation for objective, in-depth analysis that has given SRI a high degree of credibility among government leaders and business executives.

Extensive National and Global Experience. Having worked with business and government leaders throughout the United States and in over a hundred countries throughout the world, we have broad experience and databases on international best practices.

Depth. SRI employees are recognized as respected authorities and as sought-after sources of objective analysis on S&T policy analysis, research evaluation, economic development, investment site selection and risk analysis, policy assessments, market studies, and industry/sector growth strategies.

Extensive Contacts. Our established reputation and extensive contacts in government agencies, universities, private firms, and international agencies provide us with an inside track to the latest policy and economic developments, and access to the most up-to-date information.

A list of recent research evaluation and planning projects as well as the biographies of CSTED staff, are available on the website listed below.

David Cheney
Center for Science, Technology &
Economic Development
SRI International
1100 Wilson Blvd., Suite 2800
Arlington, VA 22209, USA
david.cheney@sri.com
Tel: 703-247-8707, Fax: 703-247-8410
<http://www.sri.com/policy/csted/>

