

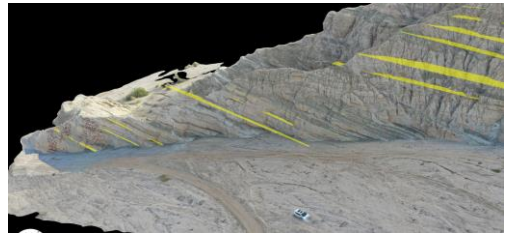


# DUE-1839705, Integrating Cognitive Science and Intelligent Systems to Enhance Geoscience Practice

T. Shipley (Temple U), A. Davatzes (Temple U), A. Hsieh (U of Pennsylvania), & B. Tikoff (U of Wisconsin);  
 tshipley@temple.edu

The project aims to support geology field work by developing autonomous vehicles to collect data on 3D features and develop protocols to record uncertainty in data and models.

Training sedimentary layers recognition using citizen science.



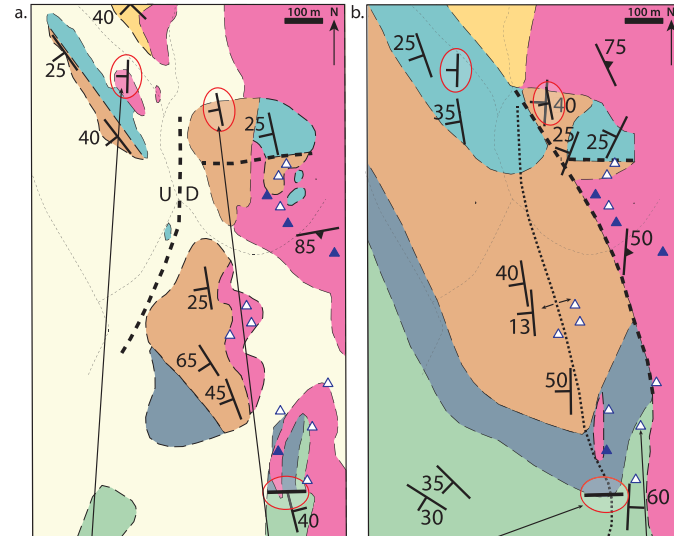
People agree on bedding planes



Some challenges

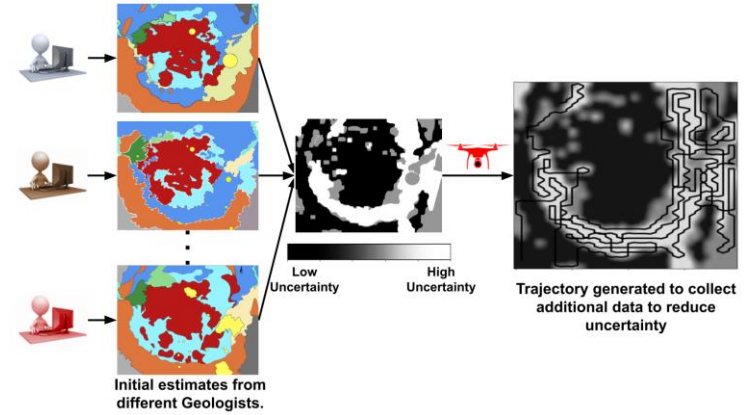


Recording uncertainty in field data for transparency and collaboration.



<b>SHF152A</b> Lower Deep Springs Formation Lithology: 1/S Attachedness: 3/S Strike & Dip: Geometry: 2/S 176/60 W 	<b>SHF165A</b> Middle Deep Springs Formation Lithology: 4/S Attachedness: 3/S Strike & Dip: Geometry: 3/S 170/62 W 	<b>SHF 81</b> Campito Formation Lithology: 3/S Attachedness: 4/S Strike & Dip: Geometry: 3/S 013/39 E 	<b>SHF103A</b> △ Sage Hen Flat Granite Lithology: 5/S Attachedness: 1/S Strike & Dip: Geometry: N/A N/A 
---	--	---	---

Planning to reduce uncertainty



Data fusion in the natural world.

